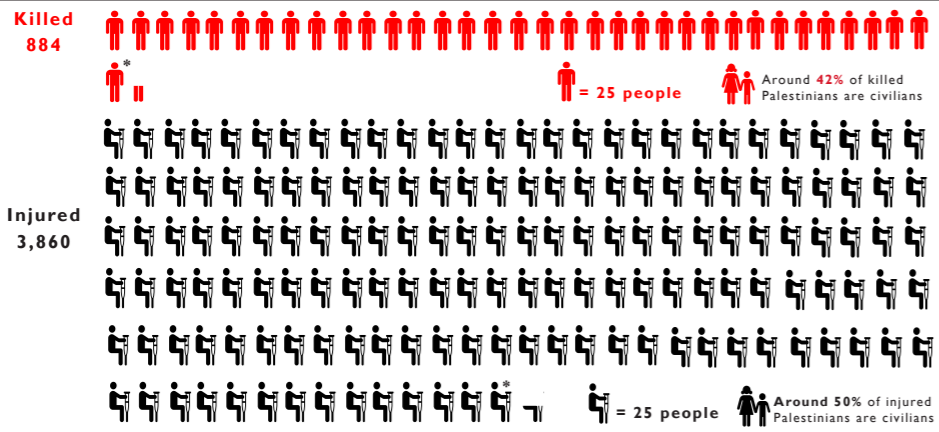


# GAZA Situation Map - as of 11th of January 2009

## Reported Palestinian casualties as of 11 January 2009



\*Based on MoH as of 11 January 2009

## Reported Israeli casualties as of 11 January 2009



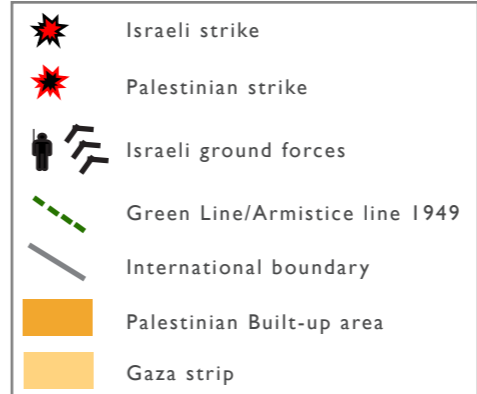
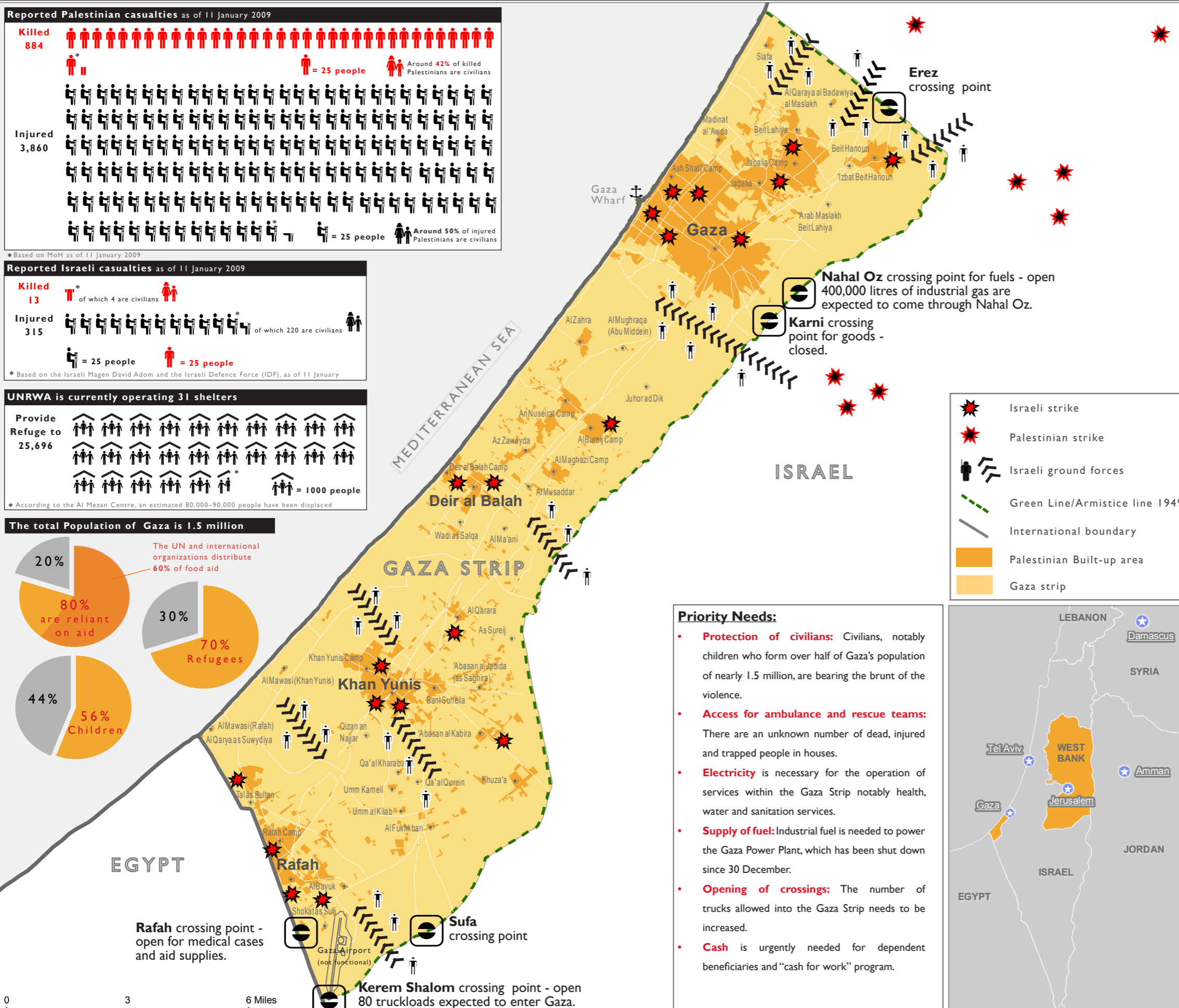
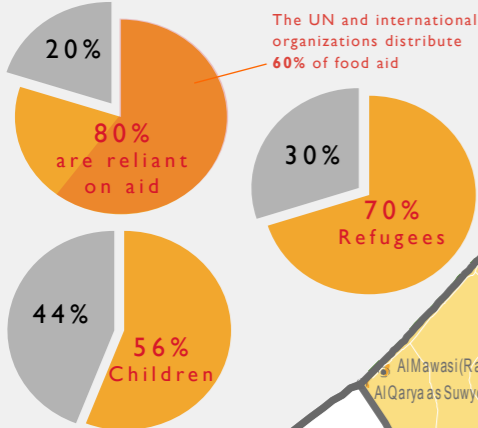
\*Based on the Israeli Magen David Adom and the Israeli Defence Force (IDF), as of 11 January

## UNRWA is currently operating 31 shelters



\*According to the Al Mezan Centre, an estimated 80,000-90,000 people have been displaced

## The total Population of Gaza is 1.5 million



### Priority Needs:

- Protection of civilians:** Civilians, notably children who form over half of Gaza's population of nearly 1.5 million, are bearing the brunt of the violence.
- Access for ambulance and rescue teams:** There are an unknown number of dead, injured and trapped people in houses.
- Electricity** is necessary for the operation of services within the Gaza Strip notably health, water and sanitation services.
- Supply of fuel:** Industrial fuel is needed to power the Gaza Power Plant, which has been shut down since 30 December.
- Opening of crossings:** The number of trucks allowed into the Gaza Strip needs to be increased.
- Cash** is urgently needed for dependent beneficiaries and "cash for work" program.



### Situation

- UNRWA announced on 10 January that it would **lift restrictions** on its staff movements.
- UNRWA opened **four new shelters** on 10 January in response to increased demand in Gaza City, Jabalia, and Deir al Balah.
- The Gaza Power Plant (GPP) partially resumed functioning on 10 January.
- According to WHO, **189 patients**, mostly war injuries but also some chronically ill, have been transferred through Rafah crossing as of 10 January.
- Approximately **500,000 people** have no access to running water.
- Organizations continue to face difficulty in distributing assistance of depleting stocks due to the security situation.
- Access between northern Gaza and the rest of the territory remains possible only via the coastal road west of the former Israeli settlement of Netzarim and is restricted to **humanitarian relief assistance**.
- Much of the population of the Gaza Strip continues to live without electricity.
- Hospital electricity is still being provided **by back-up generators**.

**Disclaimers:**  
 The boundaries and names shown and the designations used on all maps do not imply official endorsement or acceptance by the United Nations.  
 The data and information represented originates from OCHA oPt office as indicated.  
**Creation date:** 11 January 2009  
**Map sources:** OCHA oPt office.  
**Narrative and statistical sources:** UN OCHA and MoH  
 Situation Map 4  
 Printable: on A3 paper size